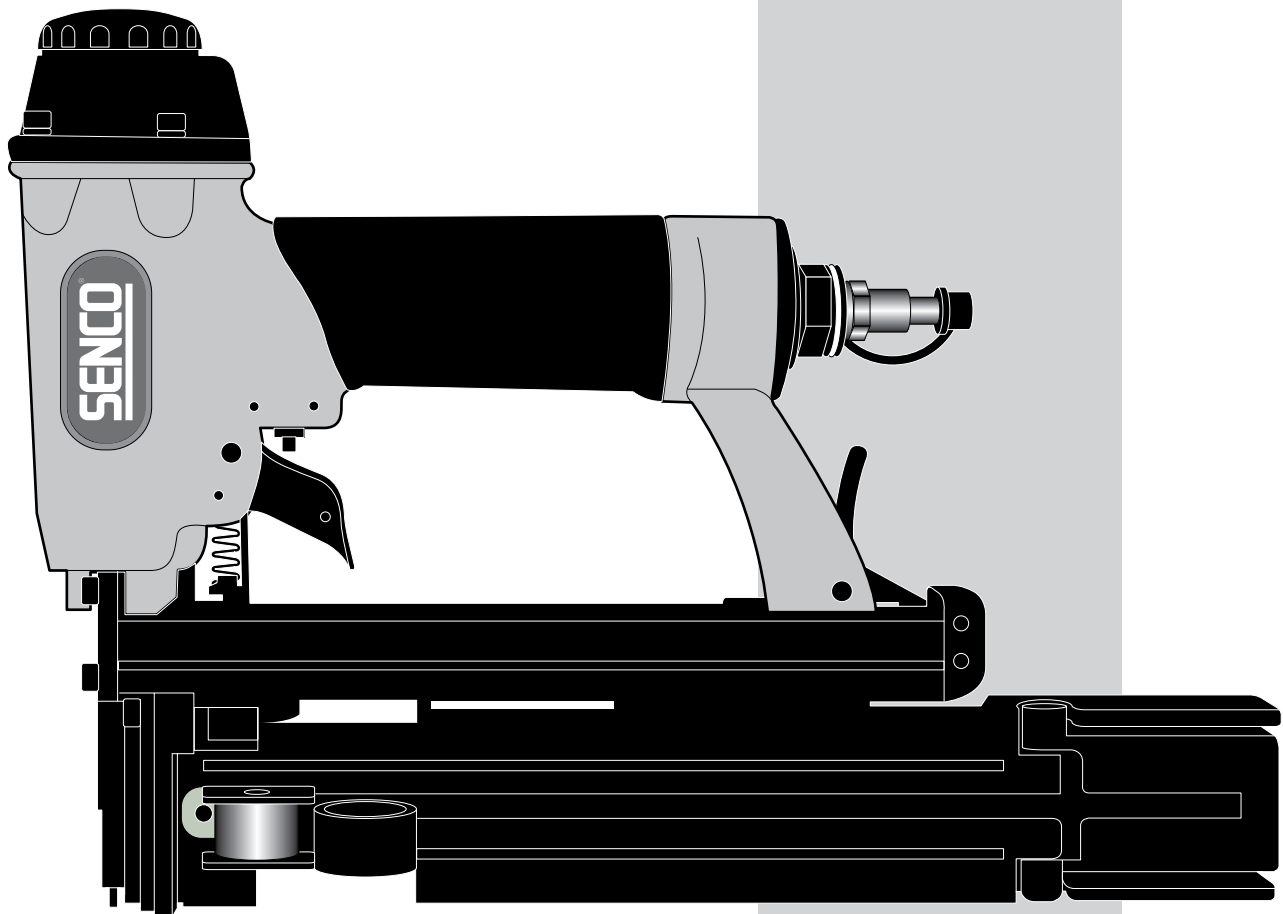


BC58

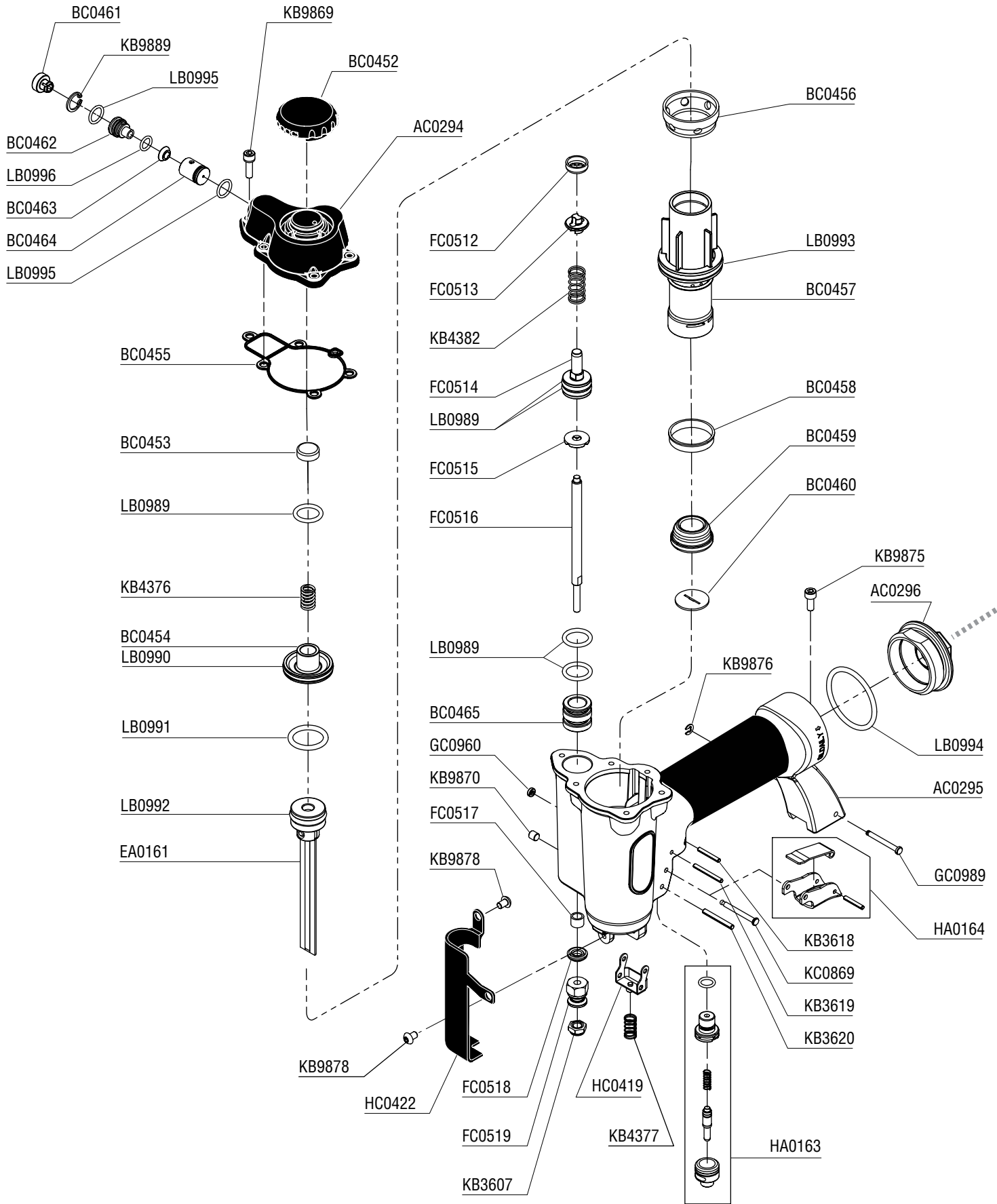
BUTTON CAP STAPLER

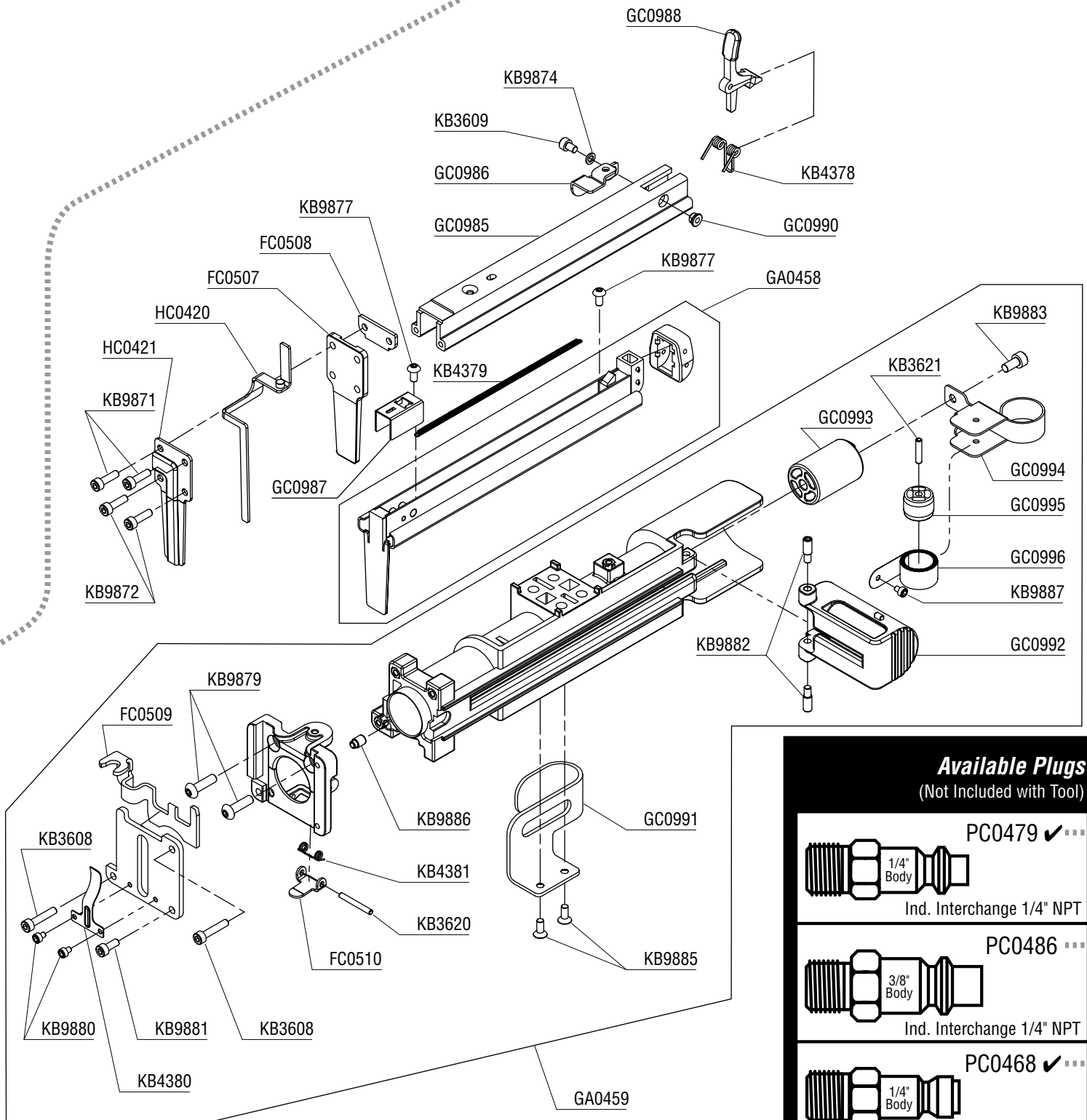


Parts Reference Guide



* Schematic drawings inside

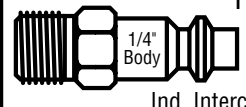
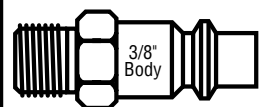
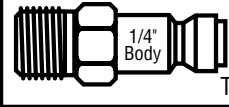
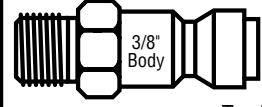




NFD04A Revised July 18, 2007 (Replaces 4/23/07) © 2006, 2007 by Senco Products, Inc. Cincinnati, Ohio 45244 - U.S.A.

Available Plugs

(Not Included with Tool)

	PC0479 ✓
Ind. Interchange 1/4" NPT	
	PC0486
Ind. Interchange 1/4" NPT	
	PC0468 ✓
Tru-Flate 1/4" NPT	
	PC0474
Tru-Flate 1/4" NPT	

✓ **Recommended Plugs**
Plugs shown smaller than actual size

BC58 BUTTON CAP STAPLER

REPLACEMENT PARTS LIST • LISTA DE PARTES DE REPUESTO • ERSATSTEILE-LISTE • LISTE DE PIÈCES DE RECHANGE

PART NO.	DESCRIPTION	DESCRIPCIÓN	BESCHREIBUNG	DÉSIGNATION
AC0294	CAP	TAPA	KAPPE	BOUCHON
AC0295	MAIN BODY	CARCASA	GEHÄUSE	CORPS
AC0296	END CAP	TAPA	KAPPE	BOUCHON
BC0452	DEFLECTOR	DESVIADOR	ABWEISER	DÉFLECTEUR
BC0453	SEAL	SELLO	DICHTUNG	JOINT
BC0454	HD VALVE PISTON	PISTON	KOLBEN	PISTON
BC0455	CYLINDER CAP SEAL	SELLO	DICHTUNG	JOINT
BC0456	COLLAR	CILINDRO	ZYLINDER	CYLINDRE
BC0457	CYLINDER	CILINDRO	ZYLINDER	CYLINDRE
BC0458	CYLINDER RING	ANILLO	REIFEN	ANNEAU
BC0459	BUMPER	AMORTIGUADOR	PUFFER	AMORTISSEUR
BC0460	DRIVER GUIDE	GUÍA	FÜHRUNG	GUIDE
BC0461	DEFLECTOR	DESVIADOR	ABWEISER	DÉFLECTEUR
BC0462	EXHAUST VALVE-B	VÁLVULA	VENTIL	VALVE
BC0463	EXHAUST VALVE-C	VÁLVULA	VENTIL	VALVE
BC0464	EXHAUST VALVE-A	VÁLVULA	VENTIL	VALVE
BC0465	BRACKET	SOPORTE	HALTERUNG	SUPPORT DE FIXATION
EA0161	DRIVER ASY	ASAMBLE DE PISTON	KOLBEN-ZUSAMMENBAU	PISTON D'ASSEMBLÉE
FC0507	DRIVER GUIDE COVER	CUBIERTA	ABDECKUNG	COUVERCLE
FC0508	PLATE	PLACA	PLATTE	PLAQUE
FC0509	PUSHER	ALIMENTADOR	NAGELSCHIEBER	POUSSOIR
FC0510	FIX-PLATE	PLACA	PLATTE	PLAQUE
FC0512	SEAL	SELLO	DICHTUNG	JOINT
FC0513	SPRING SEAL	SELLO	DICHTUNG	JOINT
FC0514	PISTON	PISTON	KOLBEN	PISTON
FC0515	BUMPER	AMORTIGUADOR	PUFFER	AMORTISSEUR
FC0516	PISTON SHAFT	PASADOR	STIFT	GOUPILLE
FC0517	COLLAR	CILINDRO	ZYLINDER	CYLINDRE
FC0518	SEAL	SELLO	DICHTUNG	JOINT
FC0519	GUIDE	GUÍA	FÜHRUNG	GUIDE
GA0458	LOWER RAIL ASY	ASAMBLE DE CARGADOR	MAGAZIN-ZUSAMMENBAU	MAGASIN D'ASSEMBLÉE
GA0459	MAGAZINE ASY	ASAMBLE DE CARGADOR	MAGAZIN-ZUSAMMENBAU	MAGASIN D'ASSEMBLÉE
GC0960	URETHANE RETAINER	JUNTA TÓRICA	SICHERUNGSRING	RETENUE
GC0985	MAGAZINE -B	CARGADOR	MAGAZIN	MAGASIN
GC0986	BRACKET	SOPORTE	HALTERUNG	SUPPORT DE FIXATION
GC0987	PUSHER	ALIMENTADOR	NAGELSCHIEBER	POUSSOIR
GC0988	LATCH	UÑETA	VERSCHLUSS	DOIGT DE RETENUE
GC0989	LATCH PIN	PASADOR	STIFT	GOUPILLE
GC0990	INSERT	ACOPLAMIENTO	EINSATZ	INSERT
GC0991	SPRING RETAINER	JUNTA TÓRICA	SICHERUNGSRING	RETENUE
GC0992	COVER	CUBIERTA	ABDECKUNG	COUVERCLE
GC0993	PUSHER	ALIMENTADOR	NAGELSCHIEBER	POUSSOIR
GC0994	MOUNTING BRACKET	SOPORTE	HALTERUNG	CAVALIER
GC0995	FEED SPRING ROLLER	RODILLO	ROLLE	GALET
GC0996	SPRING	RESORTE	FEDER	RESSORT
HA0163	TRIGGER VALVE ASY	ASAMBLE DE VÁSTAGO	VENTILSTIFT-ZUSAMMENBAU	ENSEMBLE NOYAU
HA0164	TRIGGER ASY	ASAMBLE DE GATILLO	AUSLÖSER-ZUSAMMENBAU	ENSEMBLE GÂCHETTE
HC0419	SAFETY GUIDE	PLACA	PLATTE	PLAQUE
HC0420	SAFETY ELEMENT	ASAMBLE DE SEGURO	SICHERHEITSVORRICHTUNG	PALPEUR DE SÉCURITÉ
HC0421	RELIEF PLATE	PLACA	PLATTE	PLAQUE
HC0422	SAFETY COVER	CUBIERTA	ABDECKUNG	COUVERCLE
KB3607	LOCK NUT	TUERCA	MUTTER	ÉCROU
KB3608	SCREW	TORNILLO	SCHRAUBE	VIS
KB3609	SCREW	TORNILLO	SCHRAUBE	VIS
KB3618	SPRING PIN	PASADOR	STIFT	GOUPILLE
KB3619	SPRING PIN	PASADOR	STIFT	GOUPILLE
KB3620	SPRING PIN	PASADOR	STIFT	GOUPILLE
KB3621	SPRING PIN	PASADOR	STIFT	GOUPILLE
KB4376	COMPRESSION SPRING	RESORTE	FEDER	RESSORT
KB4377	SAFETY SPRING	RESORTE	FEDER	RESSORT
KB4378	SPRING	RESORTE	FEDER	RESSORT
KB4379	PULL SPRING	RESORTE	FEDER	RESSORT
KB4380	SPRING	RESORTE	FEDER	RESSORT
KB4381	SPRING	RESORTE	FEDER	RESSORT
KB4382	SPRING	RESORTE	FEDER	RESSORT
KB9869	SCREW	TORNILLO	SCHRAUBE	VIS
KB9870	SCREW	TORNILLO	SCHRAUBE	VIS
KB9871	SCREW	TORNILLO	SCHRAUBE	VIS
KB9872	SCREW	TORNILLO	SCHRAUBE	VIS
KB9874	FLAT WASHER	ARANDELA	SCHEIBE	RONDELLE
KB9875	SCREW	TORNILLO	SCHRAUBE	VIS
KB9876	E - RING	ANILLO	REIFEN	ANNEAU
KB9877	BUTTON HD SCREW	TORNILLO	SCHRAUBE	VIS
KB9878	BUTTON HD SCREW	TORNILLO	SCHRAUBE	VIS
KB9879	BUTTON HD SCREW	TORNILLO	SCHRAUBE	VIS
KB9880	SCREW	TORNILLO	SCHRAUBE	VIS
KB9881	SCREW	TORNILLO	SCHRAUBE	VIS
KB9882	SCREW	TORNILLO	SCHRAUBE	VIS
KB9883	SCREW	TORNILLO	SCHRAUBE	VIS
KB9885	COUNTER SUNK SCREW	TORNILLO	SCHRAUBE	VIS
KB9886	PIN	PASADOR	STIFT	GOUPILLE
KB9887	SCREW	TORNILLO	SCHRAUBE	VIS
KB9889	C - RING	ANILLO	REIFEN	ANNEAU
KC0869	TRIGGER PIVOT PIN	PASADOR	STIFT	GOUPILLE
LB0989	SEAL	SELLO	DICHTUNG	JOINT
LB0990	SEAL	SELLO	DICHTUNG	JOINT
LB0991	SEAL	SELLO	DICHTUNG	JOINT
LB0992	SEAL	SELLO	DICHTUNG	JOINT
LB0993	SEAL	SELLO	DICHTUNG	JOINT
LB0994	SEAL	SELLO	DICHTUNG	JOINT
LB0995	SEAL	SELLO	DICHTUNG	JOINT
LB0996	SEAL	SELLO	DICHTUNG	JOINT